

Wireless at work, home, Jim Miles or Starbucks

Once you are at your windows desktop look at the bottom right of your screen for a little icon that looks like a computer screen with waves moving away to the right.

Place your mouse pointer over the icon and right click your mouse

Select "View Available Wireless Networks"

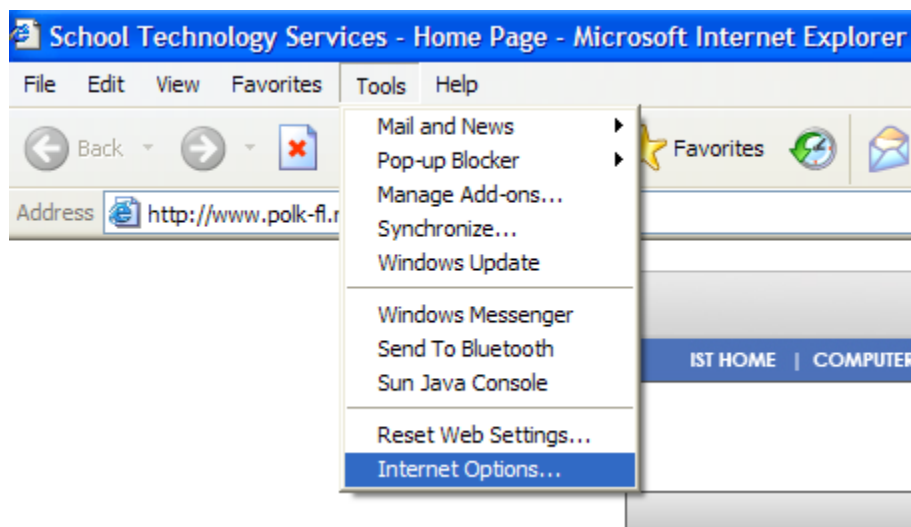
If you are at Jim Miles select the JMPD wireless and click connect. Give it a minute or so to get connected.

If you are somewhere else, follow the same steps, but select the network you want to connect to.

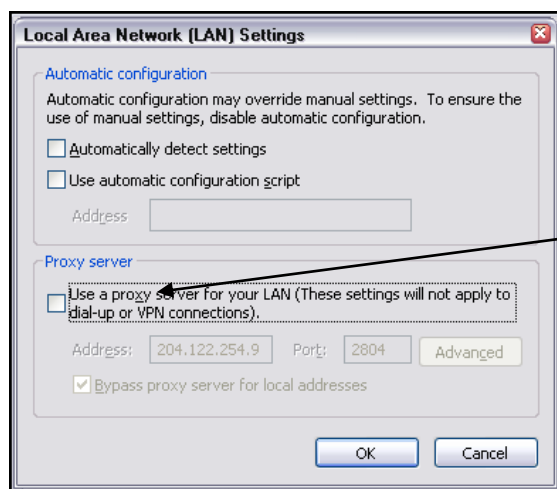
Configure your web browser to work at home, Jim Miles and office

Open up Internet Explorer

If everything seems to work, fine. If you cannot "surf" to the desired web site follow the steps below



From the Menu Bar in Internet Explorer select Tools -Internet Options



In the Internet Options box select the **Connections tab**

On the Connections tab select the **LAN Settings** button.

If the check box in the proxy server *is not checked*, check the box and click OK.

--or--

If the check box in the proxy server *is checked*, uncheck the box and click OK.

Keep Clicking OK until you are back to the main Internet Explorer window.

Close Internet Explorer.

Reopen Internet Explorer and you should be on your way.