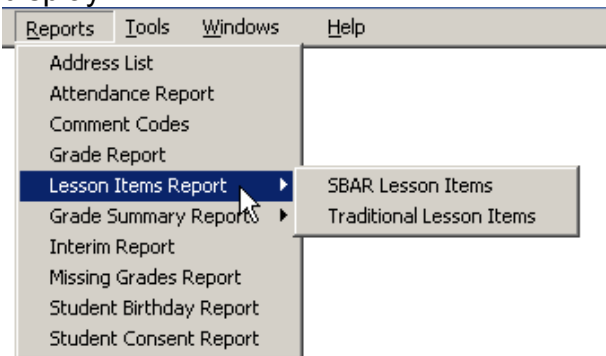


**EleGrade version 15.0.16 Notes**

## Version 15.0.16 enhancements:

- Added SBAR rule. If, in the third and fourth grading periods, the previous grading period benchmark grade is "Taught and Mastered" then the 'X' will appear as the default grade in the current grading period's benchmark in the SBAR Achievement Entry screen.
- Now, when the (E)xpand/(C)ollapse button (on the SBAR Achievement Entry screen) is clicked, screen update is turned off while the tree Expands or Collapses and back on when the Expand or Collapse is finished. The tree update runs faster with the update off and the tree nodes don't move around.
- Added dB machine name to the Logon screen.
- Added check for SBAR students prior to displaying the GetAssignment form for assigned teacher, which eliminated a "Subscript out of range" error message. Eliminated duplicate entries on the GetAssignment form which was caused by assignments from various teachers that mixed SBAR and non-SBAR students in the same assigned class.
- Reformatted User Set-Up. Tried to indicate that the user's password does not have to be changed every time the user changes their Grading Period.
- Divided Lesson Items Report into two reports SBAR and Traditional. If the teacher has only SBAR students then only the SBAR report will display, if the teacher only has non-SBAR students then only the Traditional report will display and if the teacher has a class of mixed SBAR and non-SBAR students then both reports will display.



- Added various Enhancements/Corrections such as using two dB connections when <SAVE>ing Grades and Attendance. When the first student on the SBAR entry form is a Traditional student an error occurred; this has been corrected.