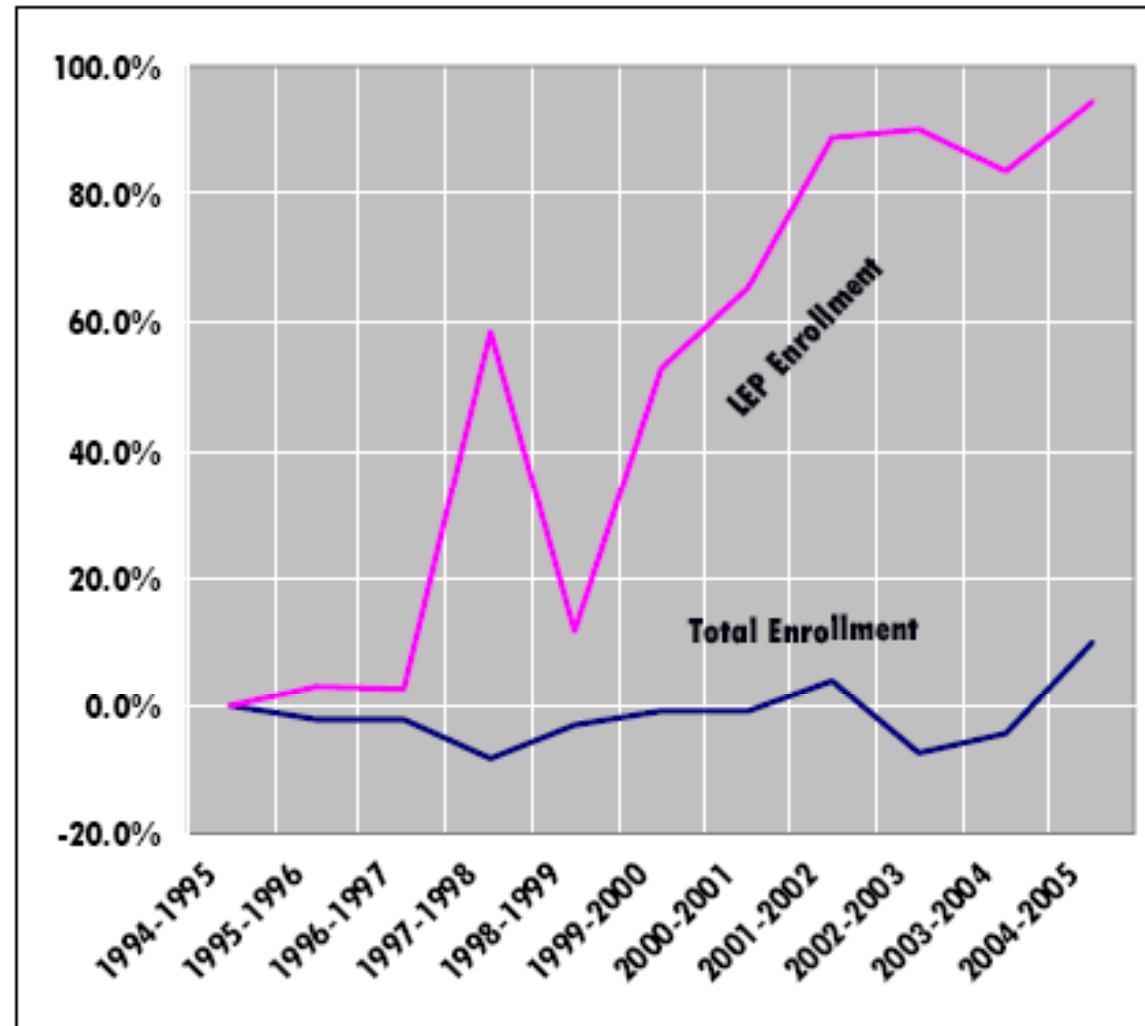


# **Buzzing Toward Reading Excellence With English Language Learners**



**Middleton-Burney Elementary  
Crescent City, Florida**

# Florida Rate of LEP Growth 1994/1995 - 2004/2005



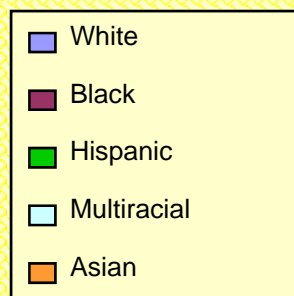
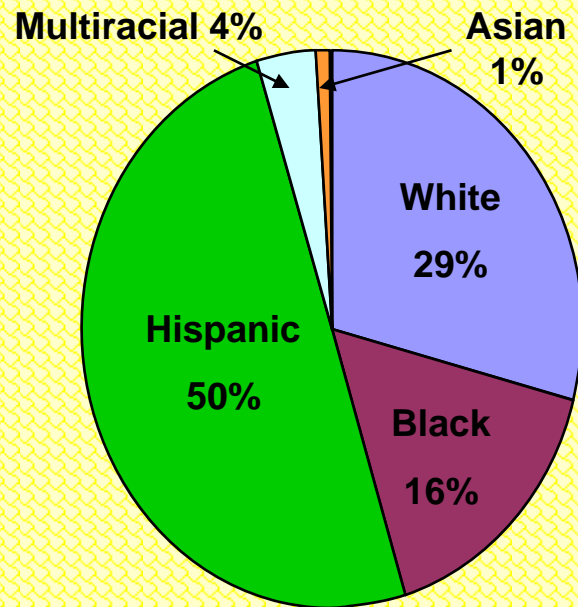
# School Demographics

- Located in Putnam County\*
- Pre-K through 3<sup>rd</sup> grade school
- Student Enrollment – 702 students
  - Hispanic population – 50%
- Teachers – 50 (most ESOL endorsed)

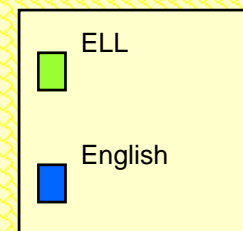
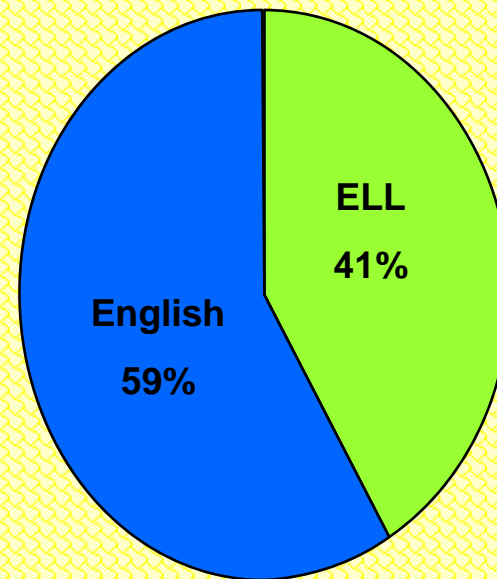
\*Putnam County ranks at highest poverty level of all 67 Florida counties.

# Middleton-Burney Student Population

## Race



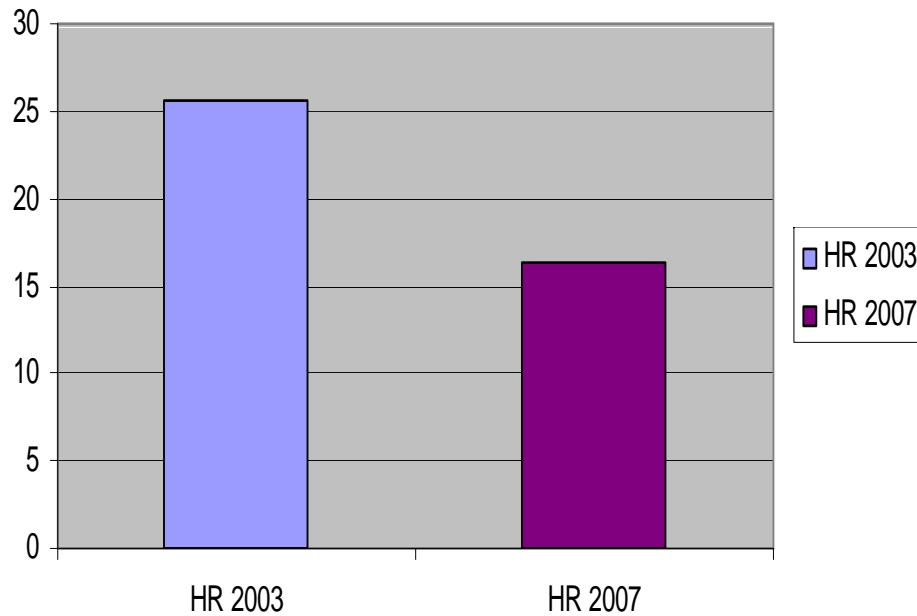
## Language



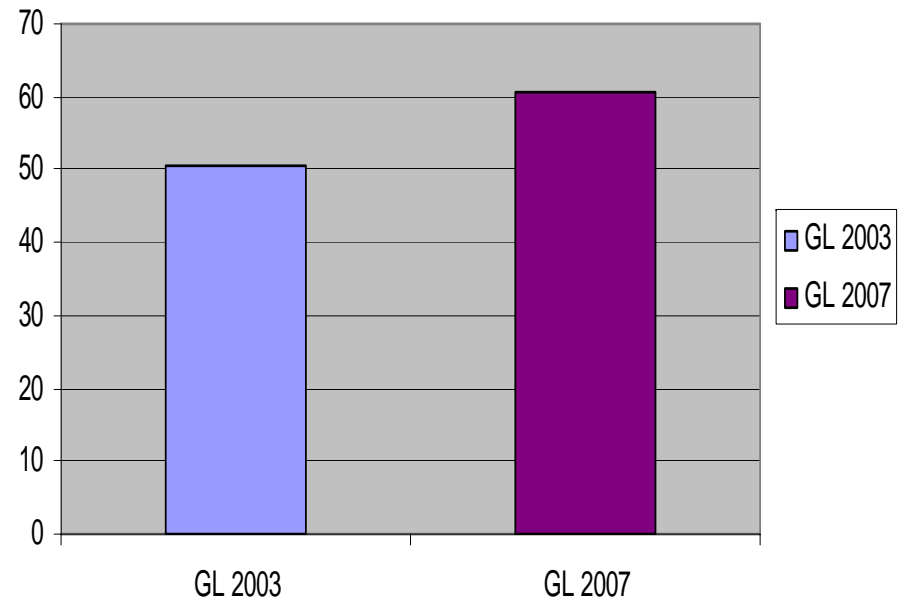
# Student Gains

(Based on the Year to Year Report)

### Percentage of Students at High Risk

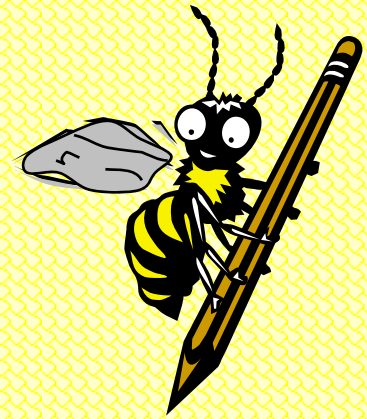


### Percentage of Students at Grade Level



# How does Middleton-Burney meet the reading needs of its ELL population?

- Data Analysis
- Professional Development
- Effective Strategies
- Technology
- Parent/Community Connection



# Data Analysis

- DIBELS
- Progress Monitoring
- Data Meetings

# Professional Development

- Reading First
  - Reading coach
  - Regional coordinator in conjunction with NEFEC school support
- ESOL endorsement
- Florida Reading Initiative (FRI)

# Principles for Working with English Language Learners

- Increase comprehension
- Use native language
- Increase student interaction
- Develop higher level thinking

# Reading Strategies to Support ELL Principles

## Increase comprehension with visual representations:

- yes/no signals
- pictures/objects
- demonstrations
- gestures
- manipulatives

## Native Language:

- bilingual support

## **Student Interaction:**

- cooperative learning
- group-based activities
- paraphrasing
- teacher-student conversations
- paired student conversations
  - Mix and Match
  - Inside/Outside Circle

## **Higher Level Thinking:**

- question extension cards
- guessing games
- graphic organizers

# Question Extension Cards

## Correct Responses

- You're right, can you tell me more?
- Yes that's good. What else do you know about that?
- You are correct. How did you learn that?
- Yes, that's a good answer. Can you tell me why?
- I like that good thinking, and I like the way that you said that.

## Incorrect or Confusing Responses

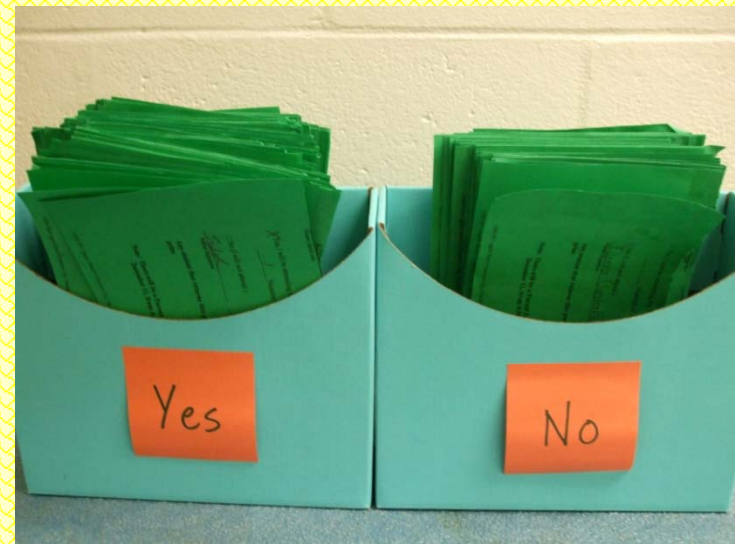
- Help me understand what you mean. Tell me again.
- Tell me more so I know what you're thinking.
- You said \_\_\_\_\_, but I thought \_\_\_\_\_. Please help me understand your thoughts.
- Do you think \_\_\_\_\_ or \_\_\_\_\_? (Give the right answer as one of the options)

# Integrating Technology

- Presentation techniques
  - Smart Boards
  - Web-based lessons
    - video streaming
- Student Practice
  - Smart Board centers
  - Electronic lessons
  - Computer programs

# Parent/Community Connection

- **Parents**
- **Volunteers**
- **Community**



**Parent**

**Involvement**

**Volunteer  
At School**

**Parents and  
Grandparents**

# Relentless



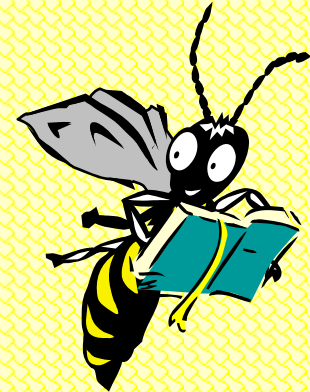
# Contact Information

Principal: Carolyn Radtke  
cradtke@putnamschools.org

Reading Coach: Jan Guzman  
jguzman@putnamschools.org

RFPD Regional Coordinator: Jan Stiers  
jstiers@mail.ucf.edu

NEFEC School Support: Cindy Cranford  
cranfordc@nefec.org



School Phone: (386) 698-1238

# References

Dukes, C. (2005). Best Practices for Integrating Technology Into English Language Instruction, *SEIRTEC News Wire*, SouthEast Initiatives Regional Technology in Education Consortium, 7 (1) Retrieved 12/6/2007 from <http://www.seirtec.org/publications/newswire.html>

Mohr, K. & Mohr, E. (2007). Extending English language learners classroom interactions using the response protocol. *The reading teacher*, 60(5).

Northwest Regional Educational Laboratory (2003). General Principles for Teaching ELL Students. Retrieved 12/6/2007 from <http://www.nwrel.org/request/2003may/general.html>

The Center for Public Education (2007). Key lessons: What research says about English language learners. Retrieved 5/25/2008 from <http://www.centerforpubliceducation.org>.

Thompson, L.W. (2004). *Literacy Development for English Language Learners: Classroom Challenges in the NCLB Age. A Title I Communiqué Special Report.*

Utah State Office of Education, Curriculum (2006). Retrieved 12/06/2007 from <http://www.schools.utah.gov/curr/ELL/interaction.html>