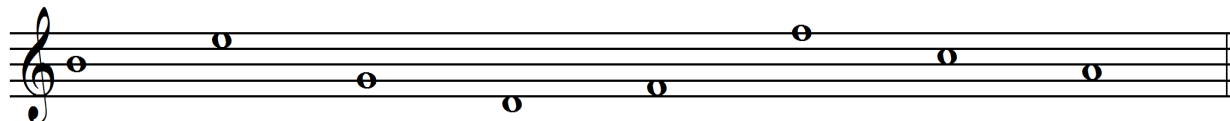


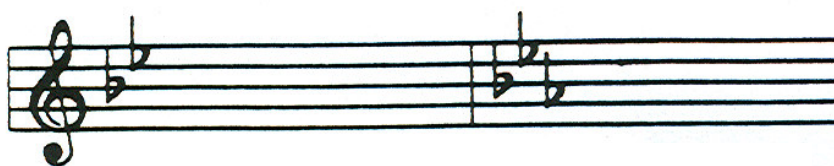
Middle School Chorus Pre-Test

Identify the letter name of the line or space that the note is on.

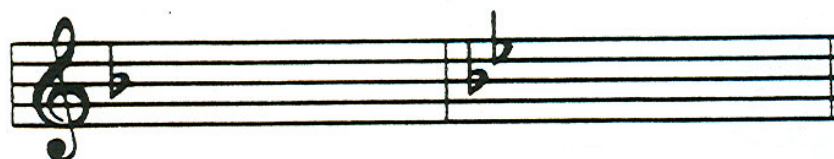


1. _____ 2. _____ 3. _____ 4. _____ 5. _____ 6. _____ 7. _____ 8. _____

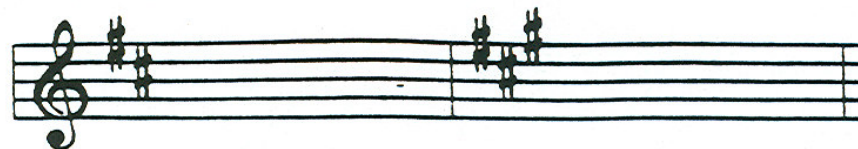
Number of correct answers ____/8= ____%
80% is mastery (EC # 9)



1. _____ 2. _____



3. _____ 4. _____



5. _____ 6. _____

Number of correct answers ____/6= ____%
80% is mastery (EC # 10)

Middle School Chorus Pre-Test

Listen to the following chords and identify whether they are Major or Minor.

1. _____ 2. _____ 3. _____ 4. _____

Number of correct answers ____/4= ____%
80% is mastery (EC # 11)

Draw the interval up from (u) or down from (d) the note as indicated.

1. 2. 3. 4. 5.

The image shows five musical staves, each with a treble clef and a single note. Below each note is a label indicating the interval to be drawn:

- 1. uP4: A note on the second line (F4).
- 2. uM3: A note on the second space (G4).
- 3. dm3: A note on the second space (G4).
- 4. uP5: A note on the first space (E4).
- 5. uM7: A note on the first space (E4).

Listen to the following and identify the intervals:

6. _____ 7. _____ 8. _____ 9. _____ 10. _____

Choices: M2, M3, P4, P5, P8

Number of correct answers ____/10= ____%
80% is mastery (EC # 12)

Middle School Chorus Pre-Test

Identify the musical symbols below.

- | | |
|----------|-----------|
| 1. _____ | 7. _____ |
| 2. _____ | 8. _____ |
| 3. _____ | 9. _____ |
| 4. _____ | 10. _____ |
| 5. _____ | 11. _____ |
| 6. _____ | 12. _____ |

Word Bank

Mezzo forte	Accent
Measure	Repeat
First ending	Bar line
Staccato	Double bar line
Treble clef	Ritardando
Crescendo/decrescendo	Mezzo piano
Bass clef	

Go to the beginning and continue until the end

Number of correct answers ____ /12= ____ %
80% is mastery (EC # 13)

Middle School Chorus Pre-Test