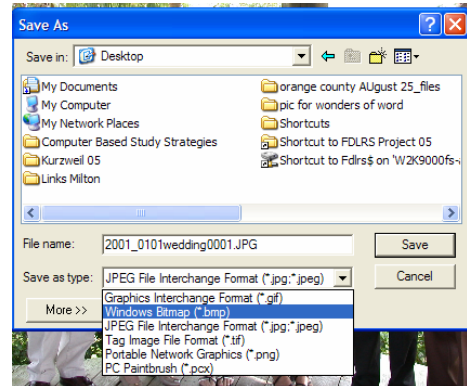


## Import Photographs

The only files that can be imported to the Boardmaker symbol library are .bmp .emf .wmf  
Many digital photos are Jpeg.

To change a digital photo to a jpeg.

1. Open the photo document
2. Drag down the file menu SAVE AS
3. In the Save as Type
4. Choose Windows Bitmap(\*.bmp)
5. Click on Save



(Page 68 in Boardmaker manual)

To import the photo to Boardmaker

1. Open Boardmaker
2. Click on the Symbol Finder
3. Drag down the File menu to Import
4. Choose Picture
5. Locate the Photo and click on OPEN
6. Type in the name of the picture
7. Click on the assign category button and choose a category and Click OK
8. Click OK
9. The picture is now in the library



(Page 55 in Boardmaker Manual)