

## Technology Workshops

### Integrating Technology

Access I 2007

Access II 2007

Integrating Boardmaker and Visual Strategies

Links to Literacy

Microsoft Word 2007 (differentiating documents with Universal Design)

Microsoft Word 2007 Wonders of Word (Differentiating instruction using technology to accommodate student needs)

Microsoft Excel 2007

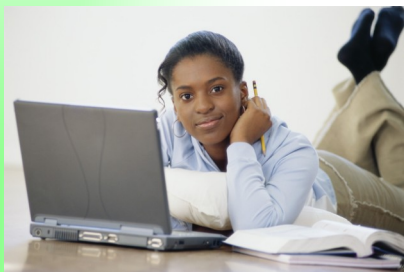
Microsoft Word Extra 2007 (newsletters, clipart)

Microsoft Word II 2007 (tables, forms, outlines)

PowerPoint 2007

PowerPoint Talking Books and More

Terrific Tech Tools for Reading & Writing



### FDLRS Main Number

Phone (863) 647-4258

Fax (863) 647-4257

Website

<http://www.polk-fl.net/districtinfo/departments/learning/ese/fdlrs.htm>

Bartow Municipal Airport

Building #270

Bartow, FL 33830

### FDLRS Manager - Polk/Hardee

Sherwin Holmes

### Child Find Specialists

Mary Kelly

Terri Orme

Teresa Hall

Cookie Sanders

### Resource Specialists

Jolene Ahlschwede

Kathy Mullens

Pam Zeigler

### Technology

Lourdes Day

John Ringleb

### Support Staff

Diane Bennett

Tracy Hannah

Jeri Hash

### Local Assistive Technology Specialists (LATS)

Lourdes Day

### Hardee County

Phone (863) 773-2600

Fax (863) 773-2640

Website

<http://www.hardee.k12.fl.us/ese/fdlrs.htm>

ESE Department

200 S. Florida Ave. Wauchula, Florida 33873

The mission of Polk County Public Schools is to ensure rigorous, relevant learning experiences that result in high achievement for our students.

2008-2009



**FDLRS SUNRISE**  
**Professional**  
**Learning**  
**Opportunities**

**for**  
**Educators,**  
**Parents**  
**and**  
**Support**  
**Personnel**  
**in Polk and Hardee**  
**Counties**

Florida Diagnostic and Learning Resources System (FDLRS) is funded through IDEA, Part B and State General Revenue Funds to provide support services to Florida's Exceptional Student Education Programs.

**FDLRS**  
**Professional Learning**  
**Opportunities**

**Behavior Workshops**

Communication That Connects

CHAMPS-Randy Sprick

Discipline in the Secondary Classroom-  
Randy Sprick

Love and Logic



Ruby Payne-A Framework for Understanding  
Poverty

True Colors

**Instructional Strategies**

Algebra Success Keys (ASK)  
(Differentiating Math)

Beyond Centers and Circle Time (pre-K)

Brain Compatible Classrooms

Collaborative Teaching



Dealing with Differences-  
Accommodations &  
Modifications

Differentiating Instruction

ESE Awareness

FCAT Accommodation Toolkit

Five Keys to Reading

Graphic Organizers

Grow To 5 Curriculum

Instructional & Classroom Management  
Strategies

Learning Strategies

Learning Styles

Reading in the Content Area

Strategies Intervention Model (SIM)

SIM Learning Strategies

Sentence Writing

Word ID

Paraphrasing

Test Taking

Paragraph Writing

Self-questioning

Assignment Completion

Self-Questioning

Visual Imagery

InSPECT

SLANT

Error Monitoring

First Letter Mnemonics

...and many more



SIM Content Enhancement

Concept Mastery

Unit Organizer

Vocabulary LINCing

Question Exploration

Clarifying Routine

Recall Enhancement

Concept Comparison

Concept Anchoring

Lesson Organizer

Course Organizer

Framing Routine

Survey Routine

Order Routine

SIM Community Building Series

Thinking Maps

**Transition Events for Educators of**  
**Students with Disabilities**

P.A.T.H. (Planning Alternative Tomorrows  
with Hope)

Secondary Transition IEP

Self Determination Skills

SIM-Self Advocacy Strategies

Standing Up For Me Curriculum

**Online Modules**  
**PDA-ESE**



Assessment and Evaluation

Foundations of ESE

Instructional Practices

Interpersonal Intervention and Participation

Language Development and Communication

Positive Behavioral Supports

Differentiating Reading for Students-Making  
it Explicit (meets reading competency 4/5)

Transition

**Online Preparation for Certification**  
**Exams**

K-6 Curriculum Review

Middle Grades Integrated Curriculum  
Review

