

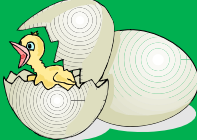



Next Generation Sunshine State Standards and CTE




Are Core Standards Important to CTE
OR
is CTE Important to the Core Standards

- The Chicken or the Egg
- Peanut Butter or the Jelly

Why is CTE Important to the Core Standards?

- Research shows Students learn best by doing.
- Students are interested in CTE subjects
- Perfect place to SEE and FEEL difficult concepts

"This common-sense approach to education can provide real-world relevance as well as academic rigor for all students, increasing their opportunities to succeed in school and work". Senator Stephen Wise, February 2010

The Issues

- Decreasing CTE enrollment due to Remediation
- End of Course Exams
 - '10-'11 – Algebra I
 - '11-'12 - Biology
 - '12-'13 – American History



Getting Started

- Connect with the Core Subject area specialists
- Identify some difficult concepts
- Connect the concepts to CTE lessons

Next Generation Standards



Next Generation Standards

- <http://www.floridastandards.org/Standards/FIStandardSearch.aspx>

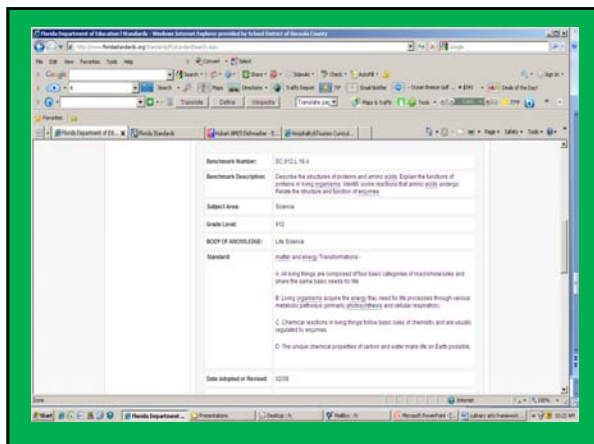
Where Does it Fit?

Where Does it Fit?

13.0 Describe the principles of basic food science –The student will be able to:

This standard supports the following Sunshine State Standards: SC.912.L.18.4

- 13.1 Explain how taste and aroma combine to give foods their flavors.
- 13.2 List physical, psychological, cultural, and environmental influences on food likes and dislikes.
- 13.3 Compare and analyze reasons for evaluating food products subjectively and objectively.



Making it Happen

- Information Sharing
- Make the infusion of concepts easy
- Start Small



Thank You

Mark Hunt
Director, Career, Technical and Adult Education
School District of Osceola County
huntmark@osceola.k12.fl.us
