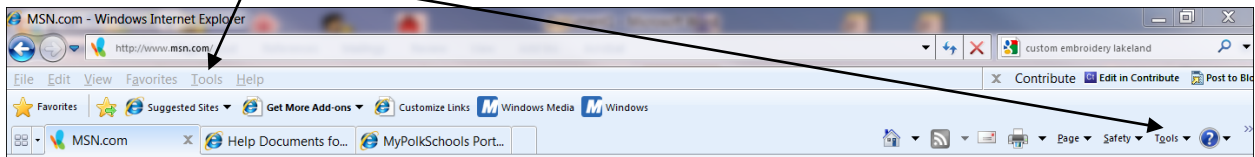


# INSTRUCTIONS TO TURN OFF INTERNET EXPLORER 8 PROXY SETTINGS

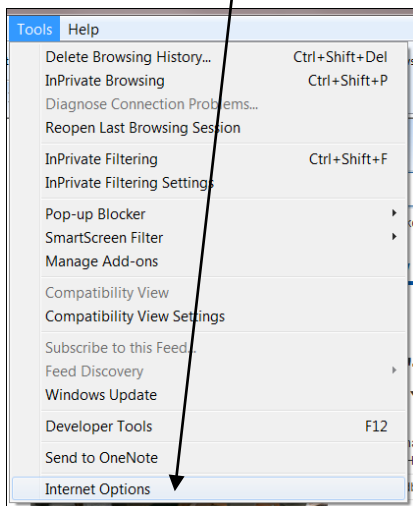
**AS SOON AS YOU RECEIVE THIS DOCUMENT, PLEASE FOLLOW THE STEPS BELOW TO REMOVE YOUR INTERNET EXPLORER PROXY SETTINGS!**

**As of October 1, 2010, the Networking Department will turn off the current PROXY Server. On every PCSB computer, you will need to follow and perform the following steps.**

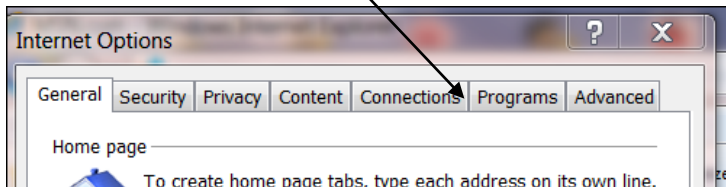
1. Click on **TOOLS** at either location.



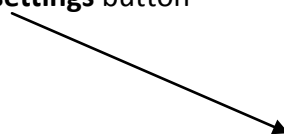
2. Click **Internet Options**



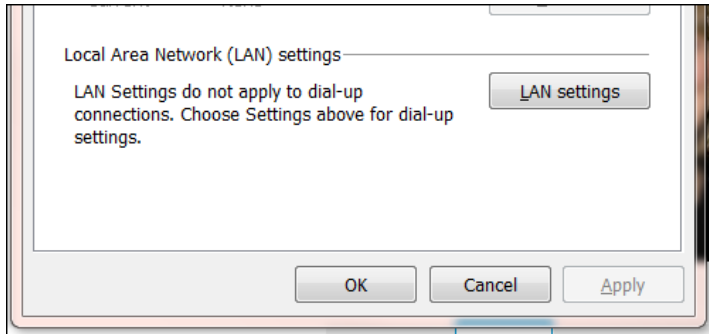
3. Click on the **Connections Tab**



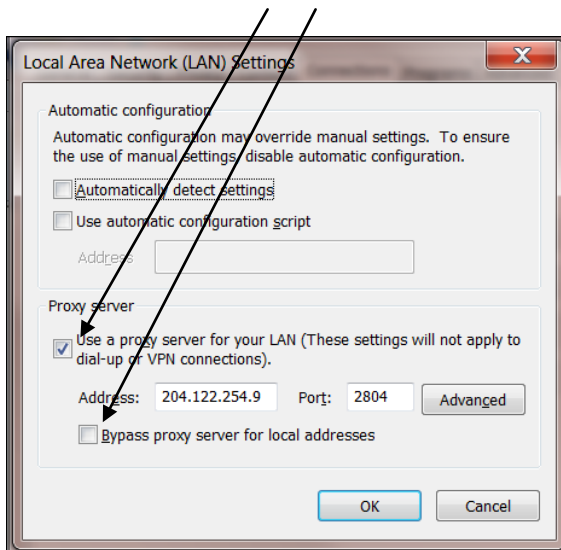
4. Click the **LAN settings** button



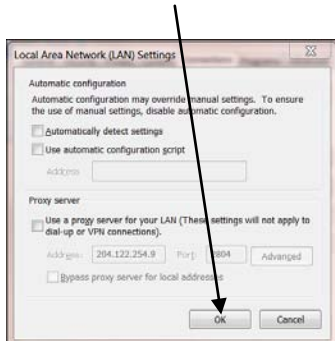
## INSTRUCTIONS TO TURN OFF INTERNET EXPLORER 8 PROXY SETTINGS



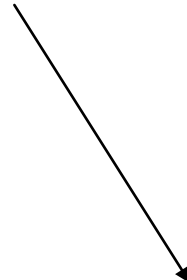
5. *Uncheck* all **Check Boxes**.



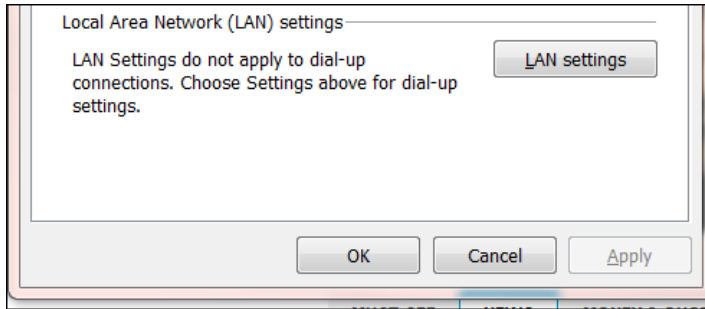
6. *Click* the **OK** button



7. *Click* the **OK** button



## INSTRUCTIONS TO TURN OFF INTERNET EXPLORER 8 PROXY SETTINGS



**Additional Note: Since the PROXY SERVER will no longer be active, you will no longer need to remember to turn off or turn on the PROXY SETTINGS on any Polk County School Computer, whether at school, home, or while you travel out of county or out of state.**