

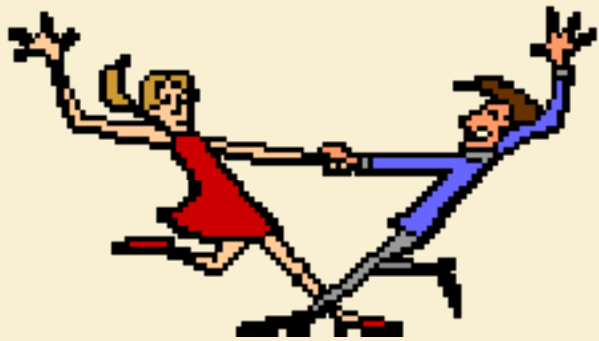
Perk Up Your Professional Development



Analexis Kennedy, Regional Coordinator
Vivian McClain, Regional Coordinator
Tammy Ruhl, Regional Coordinator

Welcome!

We are glad you are here.



Sit Back.

Relax.

Enjoy the music!

Welcome to the Coffee House....

- Black Coffee
- Cappuccino
- Espresso
- Hot Tea
- Hot Chocolate
- Coke / Diet Coke
- Pastries



Setting Up the House.....

- Introductions
- Expectations / Objectives
- Norms
- Agendas
- Staff Development Standards
- Active Learning Process
- Characteristics of Adult Learners

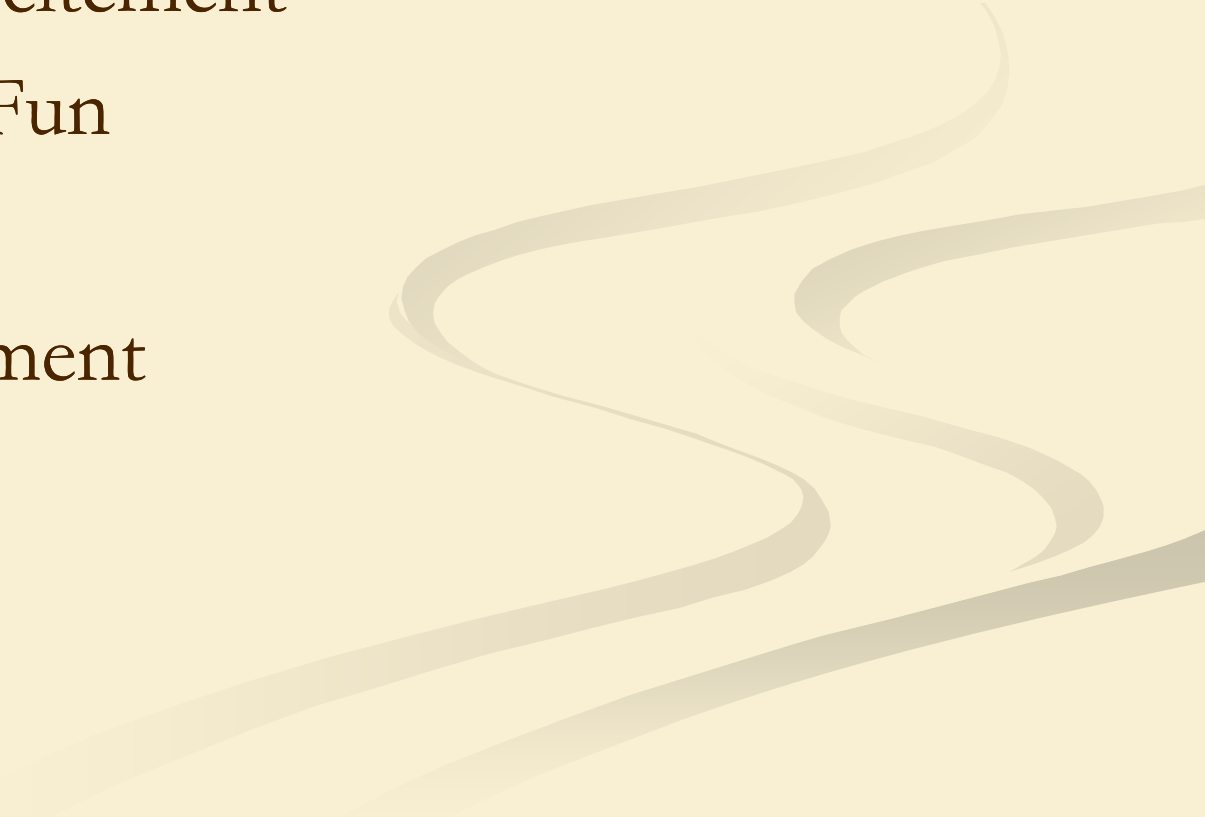
Sample of Norms

- Take care of yourself.
- Take care of your neighbor.
- Speak one at a time.
- Say what you think...with respect.
- Stay focused.
- Answer phone calls outside.
- Be on time.
- It's OK to have FUN!

Everyone Agree?



Getting Ready.....

- Building the Excitement
 - Make the time Fun
 - Door Prizes
 - Room Arrangement
- 
- The slide features a light beige background with a decorative graphic on the right side consisting of several overlapping, wavy, horizontal lines in a slightly darker shade of beige, creating a sense of movement and depth.

Don't lose sight of your
goal.....



Not just one way to make coffee...

- Professional Development / Training
- Observation
- Mentoring
- Co-Teaching
- Study Groups
- Action Research
- Personal Choice



Let's Get Acquainted.....

- Names
- Games
- Personality Analysis
- Team Builders




**“If I want them to HEAR it,
I talk.**

**If I want them to LEARN it,
they talk.”**

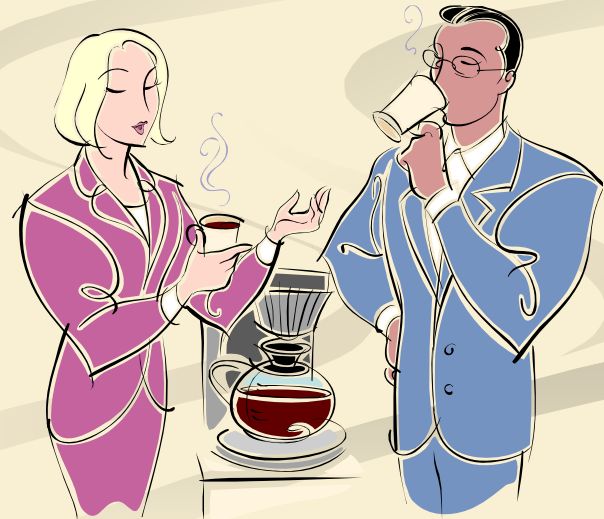
-Sharon Bowman

Drinking in the Information


- 'Crusin
 - Walk and Talk
 - Four Corners
 - ABC Charts
 - Card Sort
- 
- A decorative graphic consisting of several overlapping, wavy, light-colored lines that flow from the right side of the slide towards the left, creating a sense of movement and depth.

Characteristics of Adult Coffee Drinkers

- Turnoffs
- Breaks
- Multiple ways to Process
- Difficulties
- Room Arrangement

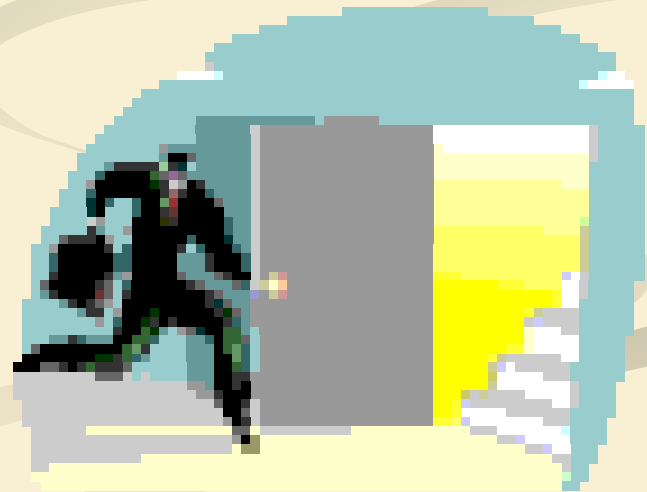


Hanging Out in the Coffee House.....

- Agenda
 - Bingo
 - Movin' and Dancin'
- 
- The background of the slide features several thick, wavy, light-colored lines that flow from the bottom left towards the right side, creating a sense of movement and rhythm.

Before we go.....

- Reflection
- Exit Slip
- Follow Up
- Leaving on a happy note



Resources

- *Great Session Openers, Closers, and Energizers.* Marlene Caroselli. 1998.
- *Train Smart: Perfect Trainings Every Time.* Rich Allen, Ph. D. 2001.
- *30 Reflective Staff Development Exercises for Educators.* Stephen S. Kaagan. 2004.
- *201 Icebreakers.* Edie West. 1997.

Resources Continued.....

- *“Sit & Get” Won’t Grow Dendrites.* Marcia L. Tate. 2004.
 - *Brain Compatible Strategies.* Eric Jensen. 2004.
- 

We appreciate you spending your
time with us!



For questions and comments:

Analexis Kennedy
Reading First Regional Coordinator
Ana.lexis@mail.ucf.edu

Vivian McClain
Reading First Regional Coordinator
v.mcclain@mail.ucf.edu

Tammy Ruhl
Reading First Regional Coordinator
truhl@mail.ucf.edu