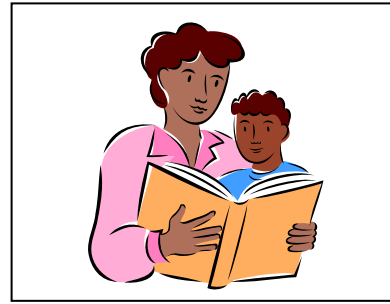


# Building PARTnerships: Parents as Reading Tutors



**Building PARTnerships: Parents as Reading Tutors (PART)** is an easily learned, scientifically developed program that can be used to help children who have reading problems. The program provides parents (or other adults) with step-by-step procedures to provide reading practice for students. The program is designed to increase fluency and comprehension with 10-15 minutes of daily tutoring. *Children must be reading at least at the sentence level to benefit from the program.*

On **September 19, 2007, from 9-11:30**, FDLRS, in conjunction with FIN (Florida Inclusion Network), will provide a training session for PART. Participants will be given the instruction and guidance necessary to use PART with students in the classroom. The training will be held at FDLRS in Room 153.

### To register:

1. Complete the registration form below and FAX this page to: Barbara Shilling, FDLRS, 469-5574, **OR**
2. Go online to <http://www.fdlrswestgate.org>, scroll to 2007-2008 Training Calendar, and click on it. Then click on Parent Workshops, and scroll to the date/title you wish to attend, and click on the title. Complete the registration page that appears, scroll to the bottom and click "Submit".  
**OR,**
3. Call Barbara Shilling at 469-5545, or Mary Bailey at 469-5429.

Registration Information	
Your Name _____	Contact Number _____
Child's School _____	Child's Grade _____



"The Florida Diagnostic and Learning Resources System is funded by the State of Florida, Department of Education, Division of Public Schools and Community Education, Bureau of Exceptional Education and Student Services, through federal assistance under the Individuals with Disabilities Education Act (IDEA), Part B; IDEA Part B, Preschool; and State General Revenue funds."