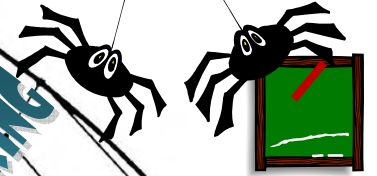
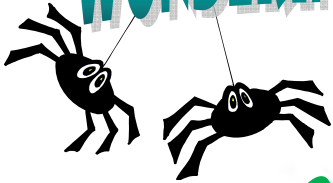


**PROFESSIONAL LEARNING OPPORTUNITY.....**

# WONDERING ABOUT WEBB'S (DEPTH OF KNOWLEDGE)



**LIMIT 2 PER SCHOOL,  
AT LEAST ONE ADMINISTRATOR**

**TRAIN-THE-TRAINER**

**STRATEGIC REASONING**  
**EXTENDED THINKING**  
**COGNITIVE COMPLEXITY**  
**EVIDENCE-BASED STRATEGIES**



**DOK (Depth of Knowledge)**

**Level 4: Extended Reasoning**

- Requires complex reasoning, planning, and thinking (generally over extended periods of time) for the investigation.
- Assessment activities have multiple steps with extended time provided.
- Students may be asked to make concepts within the context unique and among other content areas.
- Students make real-world applications in new situations.

**Level 3: Strategic Reasoning**

- Focus is on reasoning & planning in order to respond (e.g., write an essay, apply to new/real situation).
- Complex and abstract thinking is required.
- Often need to provide support for reasoning or conclusions drawn.
- More than one "correct" response or approach is often possible.

**Level 2: Skill/Concept**

- Focus is on applying skills and concepts (in a familiar/typical situation), relationships (compare, cause-effect), main ideas.
- Requires deeper knowledge than definition.
- Explaining how or why.
- Making decisions.
- Estimating, interpreting in order to respond.
- One right answer.

**Level 1: Recall**

- Focus is on discrete facts, definitions, details, or using routine procedures (memorize, follow recipe, etc.).
- Explaining "what."
- Can be "rote/learned" without requiring "deep" content knowledge or response to them (memorize content knowledge without being able to explain its meaning or apply it to a real work situation).
- Meaning or apply it to a real work situation.
- Contribution of level ones does NOT = level 2.
- One right answer.

**WHOLE**

**THINKING CAP**

**Who?**

**What?**

**Why?**

**How?**

**When?**

**Where?**

**Who learns but does not train, is lost!  
He who thinks but does not learn  
is in great danger." Confucius**

**WONDERING ABOUT WEBB'S,  
ELEMENTARY LEVEL,  
SECTION 13468  
FEBRUARY 1, 2011  
4-7 PM,  
JIM MILES PD CENTER,  
PALM ROOM**

**WONDERING ABOUT WEBB'S,  
SECONDARY LEVEL,  
SECTION 13469  
FEBRUARY 28, 2011,  
4-7 PM  
JIM MILES PD CENTER,  
CITRUS ROOM**

**NEED MORE INFORMATION:  
CONTACT THE PD DEPARTMENT AT  
647-4774 OR  
[BRITT.GROSS@POLK-FL.NET](mailto:BRITT.GROSS@POLK-FL.NET)**

**LIMITED SPACE AVAILABLE!**

