

# **Polk County Schools**

## **Magnet/Choice Enrollment Plan**

**Carolyn Bridges, Senior Director**

**Office of Magnet, Choice and Charter Schools**

**A Magnet School Assistance Program (MSAP) Project**

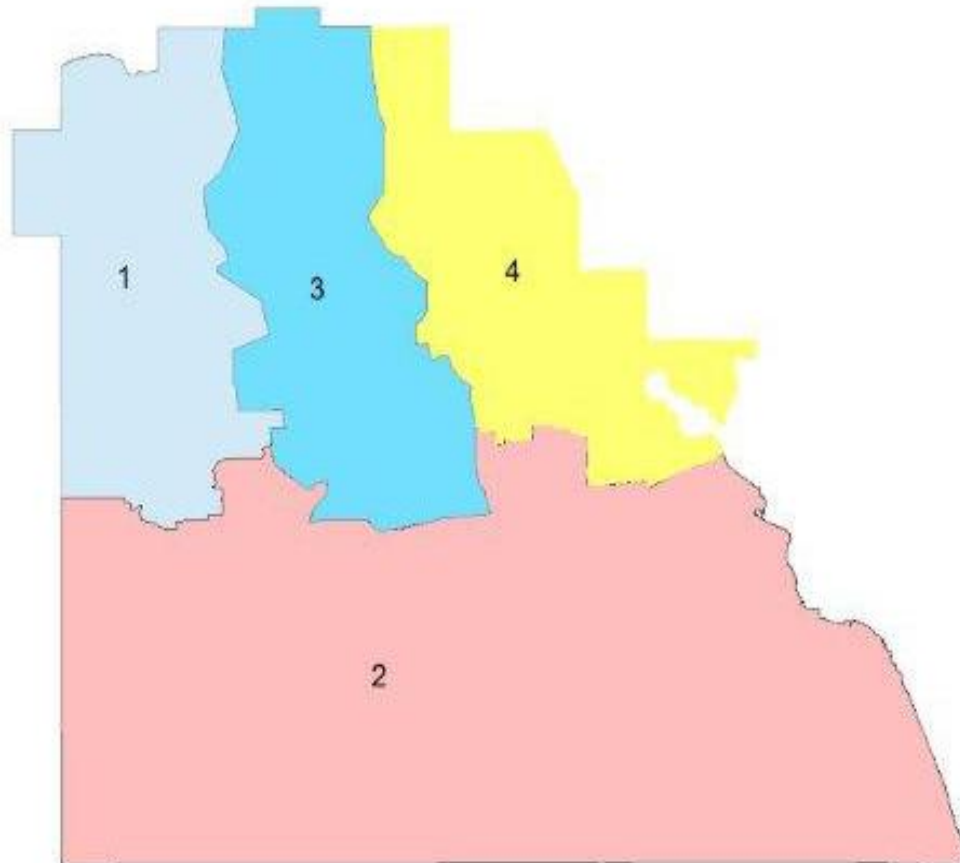
# *Proposed Magnet Enrollment Plan*

## Overview

- Move from a multi-year waiting list to an annual applicant pool.
- Use county grids as basis for existing magnet zones.
  - Lakeland
  - Bartow/Mulberry/Frostproof/Ft. Meade/ Lake Wales
  - Winter Haven/Auburndale
  - Haines City/Davenport
- Based on AYP demographic factors.
- Part of an overall review of attendance and enrollment through existing requirements for class size, school size, transfers, etc.

# Original 4 Magnet Areas- Polk County, Florida

- Magnet Area 1 (Greater Lakeland)
- Magnet Area 2 (Greater Bartow)
- Magnet Area 3 (Greater Winter Haven)
- Magnet Area 4 (Greater Haines City/Davenport)



**Four Magnet Area Zones for Polk County**

## Existing Magnet Data Based on AYP Demographic Factors

Magnet Area	Average Lunch %	Race %		Average SWD* %	Average ELL** %
Lakeland	66	W 53	B 22	14	11
		H 18	O 7		
Winter Haven	74	W 50	B 21	11	16
		H 22	O 7		
Haines City	83	W 27	B 20	10	31
		H 47	O 6		
Bartow	73	W 51	B 17	12	17
		H 27	O 5		

\*SWD: Students with Disabilities  
W: White      B: Black

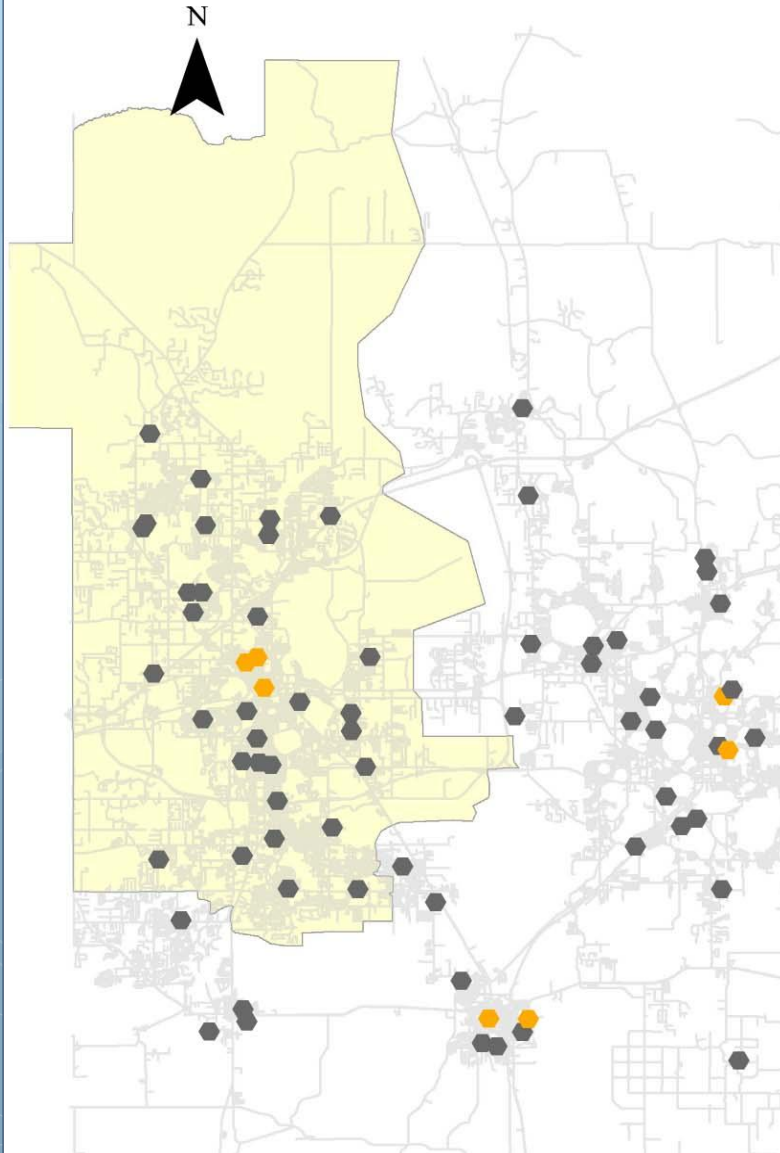
\*\*ELL: English Language Learners  
H: Hispanic      O: Other

# *Original Magnet Schools Created in Four Geographic Areas*

- **Lakeland:**
  - Lincoln Avenue Academy
  - Lawton Chiles Middle Academy
  - Rochelle School of the Arts
- **Winter Haven:**
  - Brigham Academy
  - Jewett Academy
- **Bartow:**
  - Bartow Academy
  - Union Academy
- **Haines City:**
  - Bethune Academy

ELEMENTARY AND MIDDLE SCHOOLS  
IN POLK COUNTY 2011  
LAKELAND AREA HIGHLIGHTED

B6



**All Schools in  
Lakeland  
Magnet Area  
(yellow shaded area)**

Magnet Schools – **Orange** dots  
General Schools – Black dots

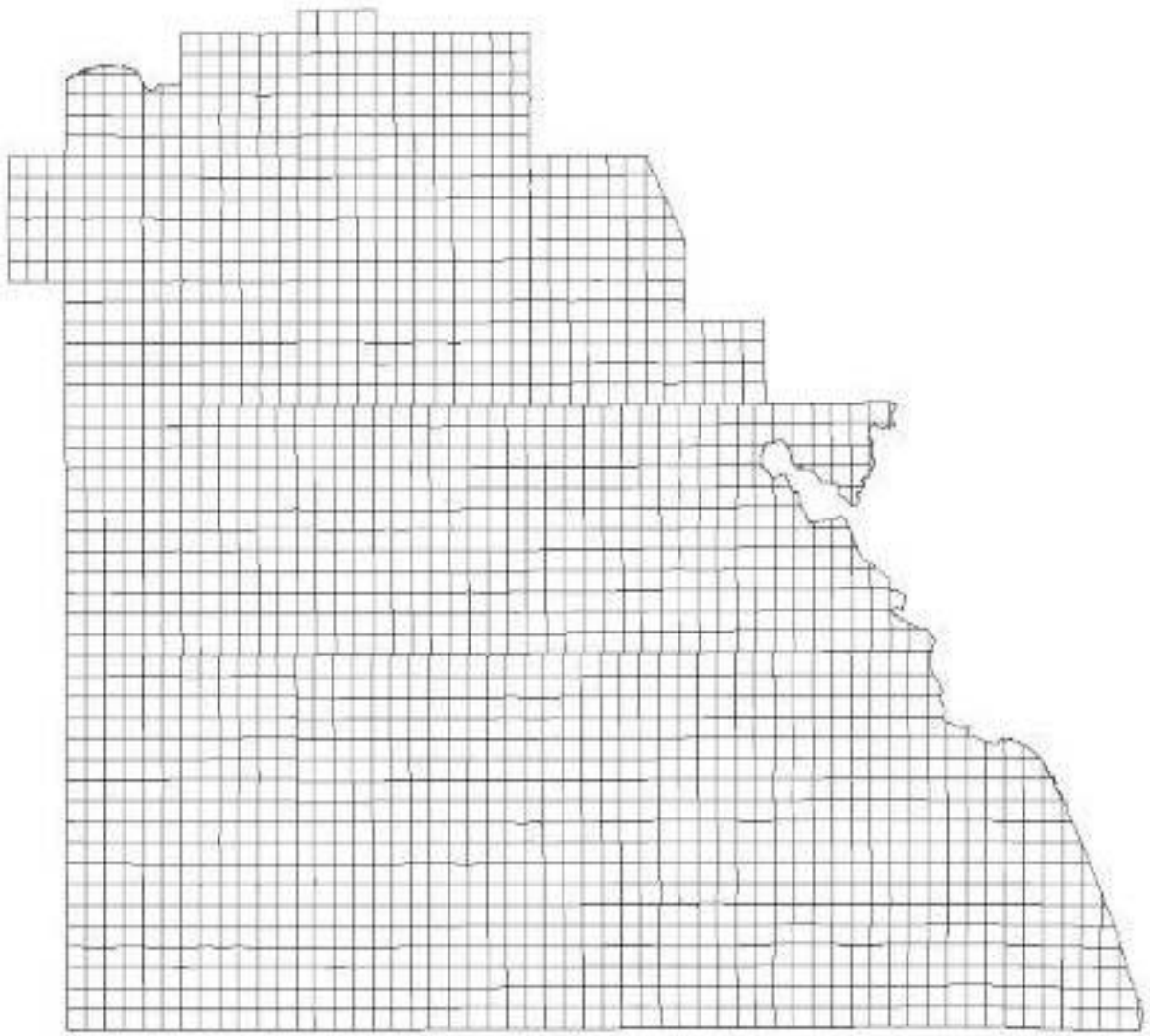
# *Current Additional Options*

- **Lakeland:**
  - Blake Academy
  - Crystal Academy of Science and Engineering
- **Winter Haven:**
  - Jewett School of the Arts
- **Bartow:**
  - Summerlin Academy
- **Haines City:**
  - Daniel Jenkins Academy
  - Davenport School of the Arts
- **Other Choice Programs governed under separate policy:**
  - Harrison Fine Arts
  - IB Programs at Bartow High School and Haines City High School

## *Four Zones Using County Grids*

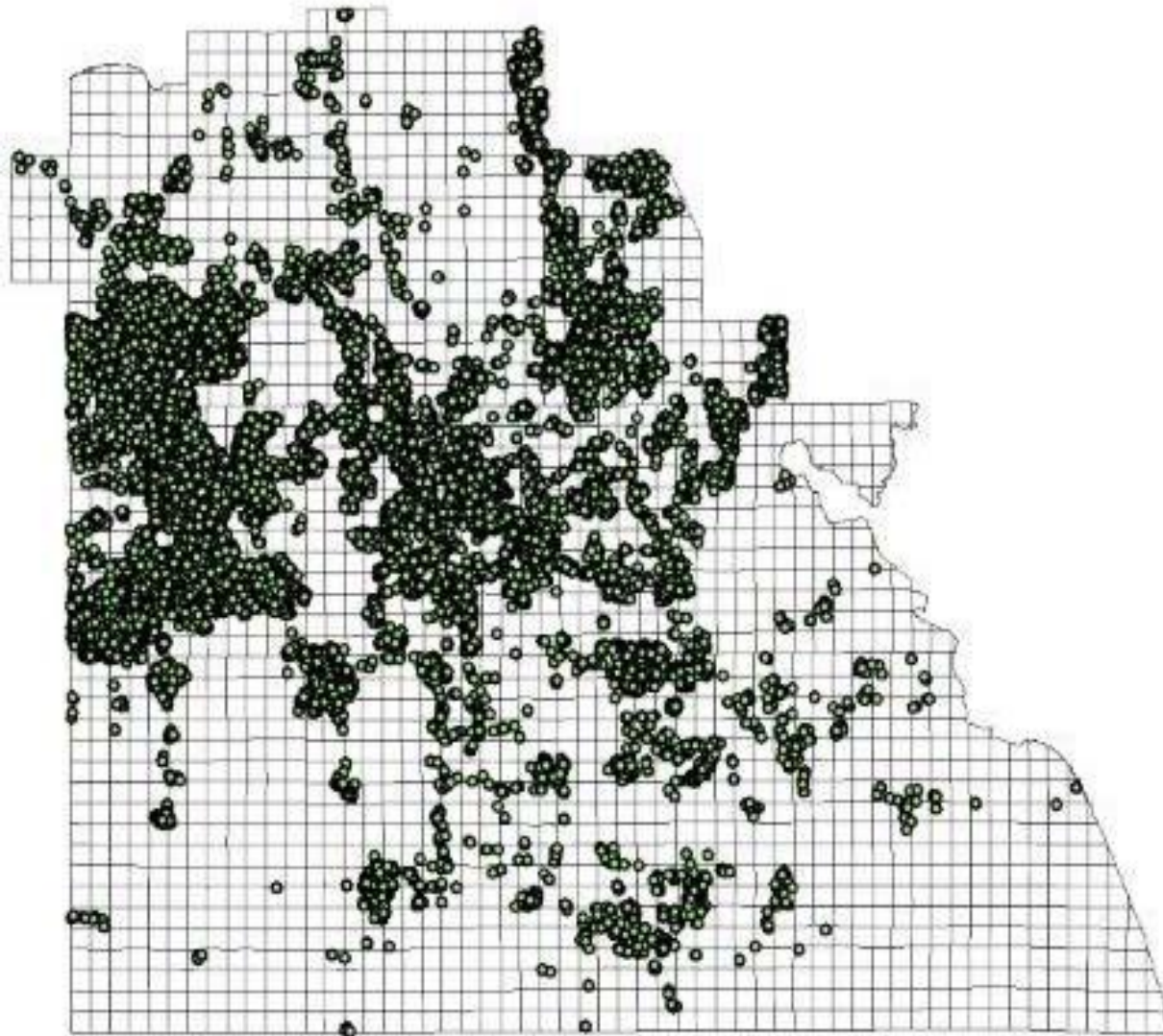
- Polk County grids
  - Developed using the same method throughout the state of Florida
  - Do not change
  - Identified by number that includes
    - Range
    - Township
    - Section

Polk County RTS Grids



**Polk County  
Range,  
Township,  
and Section  
(RTS) Grids**

Polk County RTS Grids with Elementary Students Geocoded



**Polk County  
Range,  
Township, and  
Section (RTS)  
Grid Map**

**Each dot  
represents a  
house that has  
student  
residents.**

## *Prioritizing Grids*

- Prioritize each grid using four demographic categories:
  - Free or Reduced Lunch Status (FRL)
  - Race (R)
  - Students with Disabilities (SWD)
  - English Language Learners (ELL)
- Determine grid designation.
- Based on AYP demographic factors.

# Plotting Students into Grids

- Use student data from the district's Student Information System (SIS)\*:
  - Verify that address data matches 911 site point addresses.
  - Feed student data into Grids to determine which grids have students.
- Student Example-"Sherrie" lives at 3450 Stoneway Dr. in Lakeland within grid 242910

\*March 2011

## ***Determining Magnet Zone Averages and Ranges***

- Remove Grids that do not contain students.
- For each of the four categories (FRL, R, SWD, ELL):
  - Add total values for grids that contain students
  - Calculate the average
- Determine ranges by calculating the variation from the average for each category.

## ***Applying Weights to Each Category: FRL, R, SWD, ELL***

- **Lunch Status (FRL)**
  - Grids with values that fall within the highest percentage range of free or reduced lunch for the zone will receive **8** points.
  - Grids with values that fall within the middle percentage range of free or reduced lunch for the zone will receive **4** points.
  - Grids with values that fall within the lowest percentage range of free or reduced lunch for the zone will receive **0** points.

# Applying Weights to Each Category: FRL, R, SWD, ELL

- **Race (R)**
  - Grids with values that fall within the highest percentage range of minority for the zone will receive **6** points.
  - Grids with values that fall within the middle percentage range of minority for the zone will receive **3** points.
  - Grids with values that fall within the lowest percentage range of minority for the zone will receive **0** points.

# Applying Weights to Each Category: *FRL, R, SWD, ELL*

- **Student With Disabilities (SWD)**
  - Grids with values that fall within the highest percentage range of Students with Disabilities for the zone will receive **4** points.
  - Grids with values that fall within the middle percentage range of Students with Disabilities for the zone will receive **2** points.
  - Grids with values that fall within the lowest percentage range of Students with Disabilities for the zone will receive **0** points.

# Applying Weights to Each Category: *FRL, R, SWD, ELL*

- **English Language Learners (ELL)**
  - Grids with values that fall within the highest percentage range of English Language Learners for the zone will receive **2** points.
  - Grids with values that fall within the middle percentage range of English Language Learners for the zone will receive **1** point.
  - Grids with values that fall within the lowest percentage range of English Language Learners for the zone will receive **0** points.

**Lakeland Magnet Zone Demographic Category Ranges**  
*"Sherrie's" Grid-242910: Example of Points by Category*

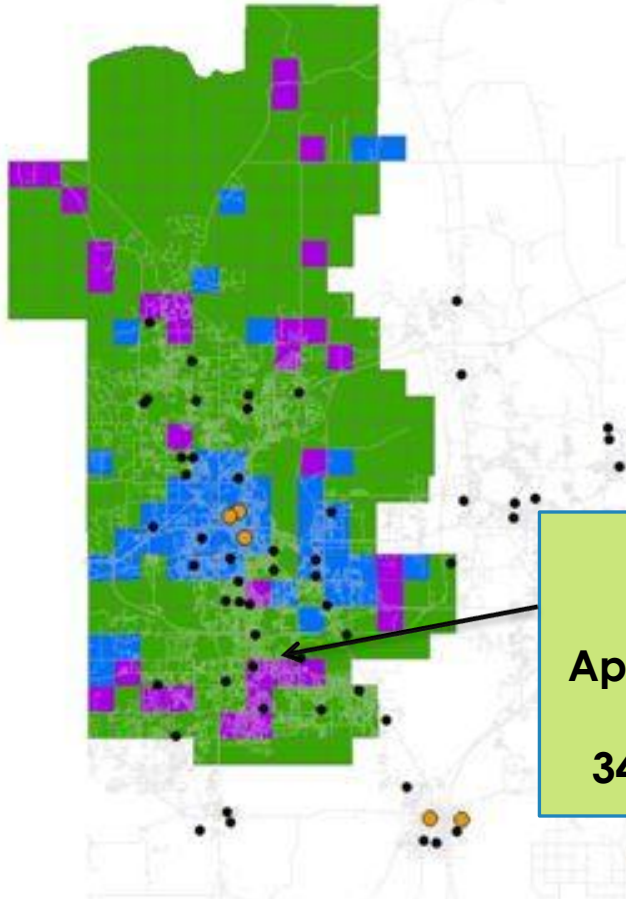
Category	Low Point Range	Middle Point Range	High Point Range
FRL	Range: 0% - 29% Points Possible: 0	Range: 30% - 84% Points Possible: 4 <b>Actual: 33%</b>	Range: 85% - 100% Points Possible: 8
R	Range: 0% - 27% Points Possible: 0	Range: 28% - 82% Points Possible: 3 <b>Actual: 72%</b>	Range: 83% - 100% Points Possible: 6
SWD	Range: 0% - 6% Points Possible: 0	Range: 7% - 23% Points Possible: 2 <b>Actual: 21%</b>	Range: 24% - 100% Points Possible: 4
ELL	Range: 0% - 2% Points Possible: 0 <b>Actual: 2%</b>	Range: 3% - 21% Points Possible: 1	Range: 22% - 100% Points Possible: 2

## Lakeland Magnet Zone Grid Ranges

*“Sherrie’s” Grid-242910: 9 Category Points Earned*

Low Range of Points Earned	Middle Range of Points Earned	High Range of Points Earned
0 – 5	6 -14	15 - 20
	Grid 242910 = 9 points	

ELEMENTARY AND MIDDLE SCHOOLS IN POLK COUNTY 2011  
LAKELAND AREA HIGHLIGHTED



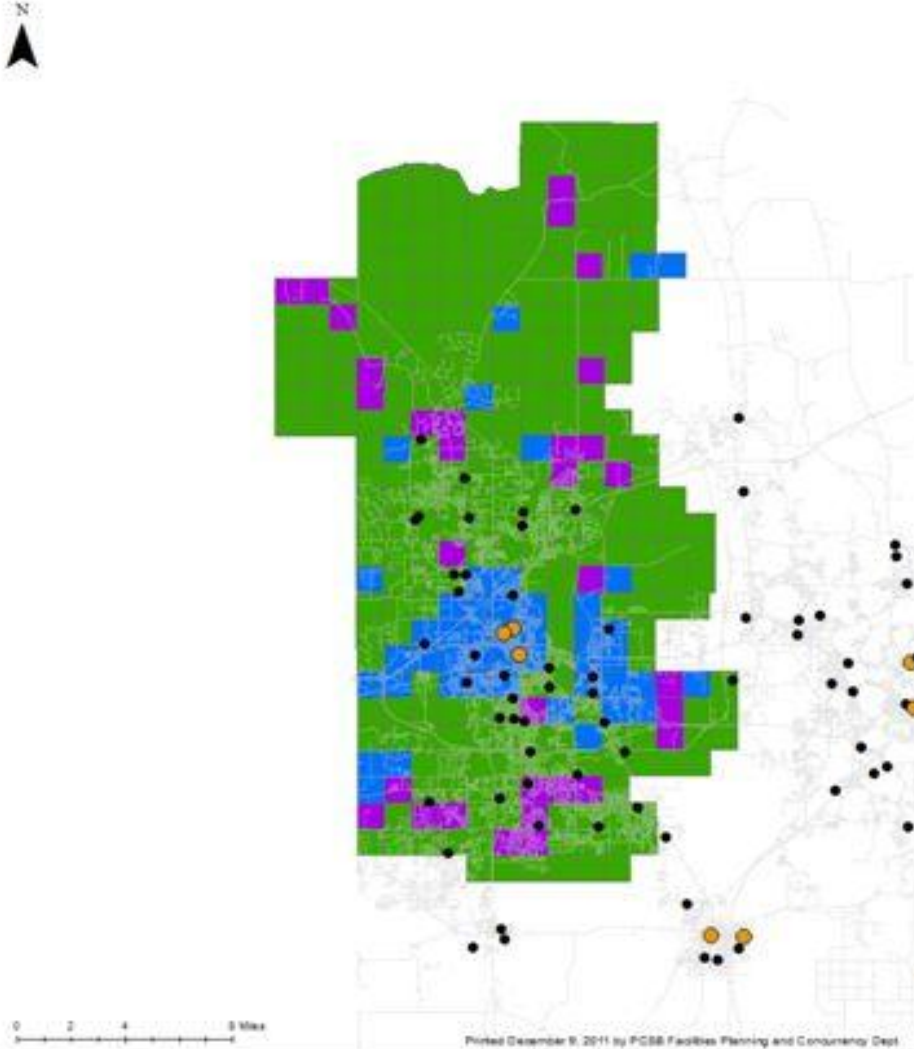
**“Sherrie’s” Grid**  
**242910**  
*(Range, Township, Section)*

**Example: 242910**  
**Applicant Residential Address:**  
**3450 Stoneway Dr, Lakeland**

## ***Assigning Grids to Applicant Pools***

- Assign pool for each grid with students within Magnet Zone.
  - **Applicant Pool with points in low range for the grids within this magnet zone.**
  - **Applicant Pool with points in middle range for the grids in this magnet zone.**
  - **Applicant Pool with points in the high range for the grids in this magnet zone.**

ELEMENTARY AND MIDDLE SCHOOLS IN POLK COUNTY 2011  
LAKELAND AREA HIGHLIGHTED



**Lakeland Magnet Area**  
showing Applicant Pool designations

- Violet** = low point range
- Green** = middle point range
- Blue** = high point range

## ***Student Assignment to Magnet Applicant Pool***

- All students residing within a shared grid are assigned to the same applicant pool. (Example: “Sherrie’s” Grid-242910)
  - Individual students in this grid may not exhibit the same category values as the grid in which they reside.
  - Increased likelihood that a student selected from an applicant pool will reflect the demographic categories of the identified grid.

# *Magnet Application Process*

# Magnet Application Process

- Parents **continue** to apply for each child during Open Enrollment annually.
- Parents must **continue** to submit a separate application for each child every January until enrolled into a Magnet or Choice school.
- All applications are placed into one of the three applicant pools based on their residential address within a county grid.
- Applicant pools are established at each grade level.

# *Student Assignment Process*

- As a seat becomes available in a magnet school:
  - Review demographic category values for that particular magnet school.
  - Determine which applicant pool is needed, based on the student population of the magnet school.
- Students on existing waiting lists will be accepted prior to students in the applicant pool.
- A computer-generated lottery will be conducted to select a student from the appropriate applicant pool.