

Parent Liaisons

For Parents of Students with Disabilities

Polk County Schools, Parent Liaisons guide and empower parents to become better advocates for their children as they navigate the ESE process. Meet the Polk County Parent Liaisons for the Exceptional Student Education Program

A Parent Liaison

Provides:

Information and guidance

Information on family resources available state wide and locally
Schools assistance in implementing parent involvement strategies

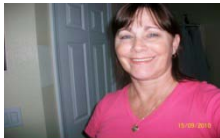
Assistance and support for the IEP process



Beverly Brimer has many years of experience as a parent of a former student with disabilities in Polk County Schools. She serves as a liaison between parents who have students with disabilities and the school district. She is available to attend Individual Education Planning (IEP) meetings, school conferences, and is available as a resource for information to both parents and educators of children with disabilities. She also helps parents understand their child's disability and gives suggestions on how to help them. To inquire about, or with any other concerns or questions, Beverly may be reached at (863) 640-2144 or Suwannee54@msn.com.



Hope Workman has been a Parent Services Consultant with the Exceptional Student Education Services for the past 17 years. She has 2 children with ADHD (Attention Deficit Hyperactive Disorder, and serves as a liaison between parents who have children with ADHD and the school district. She is available as a resource for information to both parents and educators of children with ADHD. She facilitates a support group with meets alternate months between Winter Haven and Lakeland. To inquire about, or with any other concerns or questions, Hope may be reached at: (863) 646-8042 or hope.workman@polk-fl.net.



Karyn Spencer, Lead PEER, and Paula Mueller, PEER, are Parent Educator Exceptional Resources (PEERs). They partner between Family Network on Disabilities of Florida and Exceptional Student Education Polk County. A PEER is a specially trained parent of a child with disabilities and through personal experiences PEER's have learned that positive teamwork among schools and families are key to children's successes. They provide information, training and support to educators, parents, and agencies on services and programs for students with disabilities through "Sharing the Commitment". To inquire about, or with any other concerns or questions, Karyn and Paula may be reached at: (800) 825-5736, Karynstc@fndfl.org, Paulastc@fndfl.org or <http://fndfl.org>.

For further information about Parent Liaisons, workshops for parents and professionals, agency support/services please contact Laura Taft FDLRS Parent at (863)647-4258 or laura.taft@polk-fl.net.